



MONTHLY MEMBERSHIP PROGRESS REPORT

District 7 N

Results as of: 8/31/2016

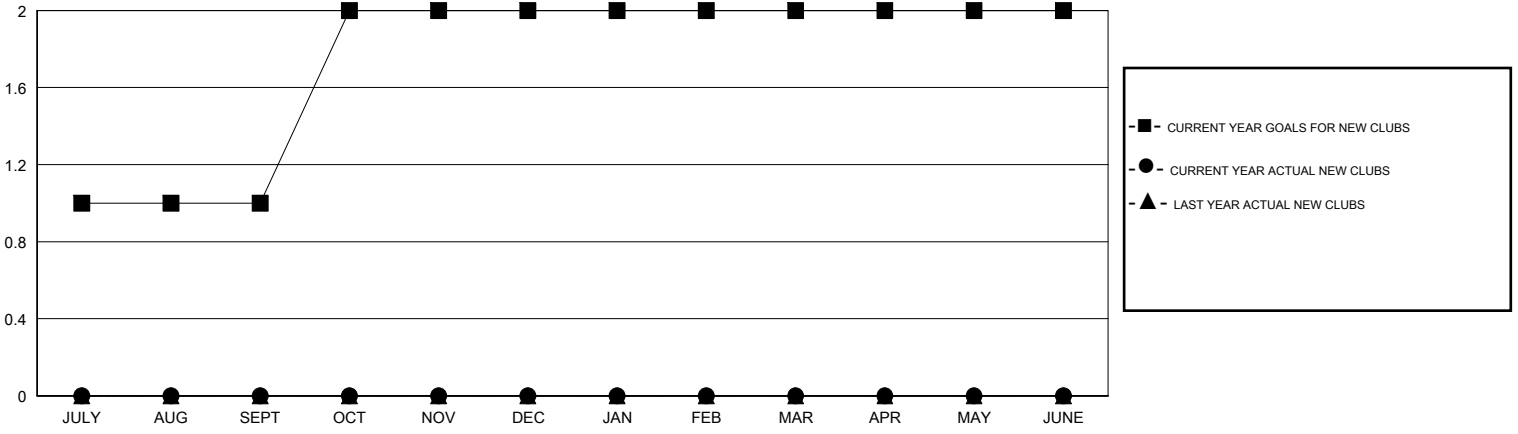
GMT: HAL GRIFFIN

LOCATION ARKANSAS

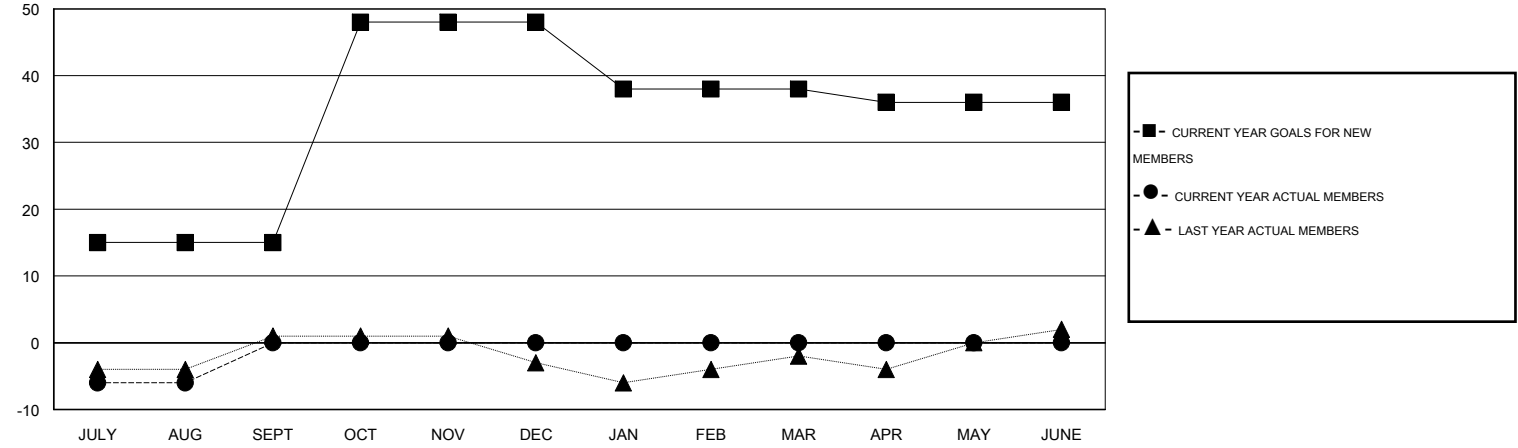
GMT CA 1

| Clubs | | | | | Members | | | | |
|-----------------------|---------------|-----------|---------------|---------------|-----------------------|-----------------|-------------------------------|-----------------|---------------|
| RESULTS FOR 2016-2017 | | | | | RESULTS FOR 2016-2017 | | | | |
| QUARTER | NEW CLUB GOAL | NEW CLUBS | DROPPED CLUBS | NET GAIN/LOSS | QUARTER | NEW MEMBER GOAL | CHARTER AND NEW MEMBERS ADDED | DROPPED MEMBERS | NET GAIN/LOSS |
| JULY/AUG/SEPT | 1 | 0 | 0 | 0 | JULY/AUG/SEPT | 15 | 7 | 13 | -6 |
| OCT/NOV/DEC | 1 | 0 | 0 | 0 | OCT/NOV/DEC | 33 | 0 | 0 | 0 |
| JAN/FEB/MAR | 0 | 0 | 0 | 0 | JAN/FEB/MAR | -10 | 0 | 0 | 0 |
| APR/MAY/JUNE | 0 | 0 | 0 | 0 | APR/MAY/JUNE | -2 | 0 | 0 | 0 |

GOALS AND ACTUAL NEW CLUBS CUMULATIVE



GOALS AND ACTUAL MEMBERS CUMULATIVE



| | | | |
|---|---|---|--------------|
| DROPPED CLUBS: 0 | 7 CLUBS OF 34 ADDED 1 OR MORE NEW MEMBERS | <u>GENDER DISTRIBUTION</u> | |
| <u>DROPPED MEMBERS</u> | | MALE | 460 (61.83%) |
| DECEASED | 3 | FEMALE | 284 (38.17%) |
| CLUB CANCELLED | 0 | FAMILY UNIT MEMBERS 151 HEAD OF HOUSEHOLD 75 NON-HEAD OF HOUSEHOLD 76 | |
| OTHER | 10 | | |
| TOTAL | 13 | | |
| CLICK HERE FOR HEALTH ASSESSMENT DATA | | | |